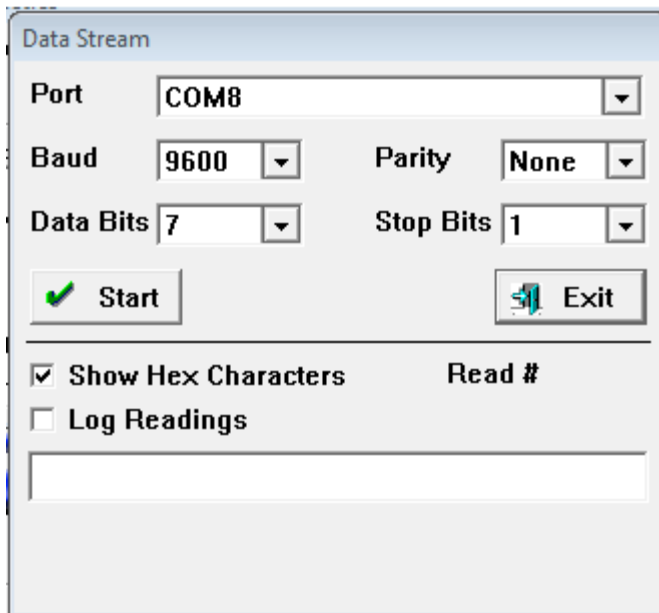


How to decode the Serial Data from an Indicator

This document explains how to decode the Serial Data from an Indicator so that you can input the correct values in the Configuration Screen. This document assumes that the reader has some previous knowledge of how ScaleCOM works.

Step 1:

You will need to know the COM Port and associated settings in order to get the data stream from the Indicator. You will do that in the DIAG. Window in ScaleCOM. (Shown below)



Once you have put in the correct settings and check off “Show Hex Characters” Click Start. In the Text Box below “Log Readings” you will see a stream of data coming from the Indicator.

Step 2:

Once you are successfully getting a stream you need to write it down. You should have something like the following.

(0A)BBBBBBBB00LBBG(0D)

Hint: While you are still getting readings from the scale you should put some weight on it to find the “Motion Character” (Explained below).

Now that you have the stream written down we can begin to gather the positions of the elements that we need. Below is a screen shot of the settings screen in ScaleCOM.

How to decode the Serial Data from an Indicator

The image shows a 'Configure Scale 1' dialog box with the following settings:

- General:** SecureScale(tm)
- Program Settings:**
 - DDE Application: Scales Item:01
 - Data File Name: c:\scale7
 - TCP/IP Address:
 - Refresh Display Rate: 0
 - Run In Tray
 - Run Minimized
 - Show Control Buttons
- Port Settings:**
 - Port: [Dropdown]
 - Baud: [Dropdown]
 - Parity: [Dropdown]
 - Data Bits: [Dropdown]
 - Stop Bits: [Dropdown]
 - Port Sharing
- Data Settings:**
 - Name: Cardinal.738 Pounds
 - Format Length: 17
 - Units Location: 9
 - Weight Location: 2
 - Motion Location: 14
 - Motion Char.: M
 - Terminator: CR
 - Zero Sequence: 0F
 - Demand Seq.: [Empty]
 - Sample Rate: 2
 - Weight Units: LB
 - Weight Length: 6
 - Motion Timeout: 10
 - Port Timeout: 2
 - Error: Setup

Buttons at the bottom: OK, Cancel, Auto, Lock, Help.

To get the Data Settings we will need to count the characters and their positions, below are the specifics for each Data Setting. The descriptions below will use the sample data stream from above as an example.

Format Length: The count of ALL characters in the data stream Note that all characters count as one, *except* any characters that are wrapped in () these sets (including the parenthesis count as ONE!) This will be 16.

Units Location: The units location is the "LB" on the stream above. So you will count from left to right the number of characters there are until the "L". This will be 12.

Weight Location: This field requires two counts. The first is counting 6 spaces from right to left starting at the first zero from the right. Mark the "B" that you land on (in this case it would be the 5th "B" in from the left). Then count from left to right until you get to the "B" that you marked. This will be 6.

How to decode the Serial Data from an Indicator

Motion Location: This character only shows when there is motion on the scale. It is usually the “B” right after “LB” and usually shows up as an “M” Count from left to right until you get to the position where you saw the “M”. In this will be 14.

Motion Char.: This is whatever character shows up when there is motion on the scale. See above. In this case “M”

Terminator: In almost all cases this is CR or (0D) the last set of characters in the string.

Sample Rate: Should stay set at 2. This is how many samples of the data stream that ScaleCOM will take before accepting a good weight reading.

Weight Units: This is the unit of measure that the scale is running in. Usually LB. In this case “LB”

Weight Length: Usually 6. The max length of the weight. Example 120000 LB.

Motion Timeout: (in seconds) The time that ScaleCOM will wait for the motion on the scale to stop. Usually 10.

Port Timeout: (in seconds) The time that ScaleCOM will wait for the serial port to be available. Usually 2.

Zero Sequence: The sequence of characters sent to the indicator to tell it to zero the scale. Consult your indicator manual or your scale company for this information.

Demand Sequence: Rarely used. For some indicators that are setup in demand mode. Consult your indicator manual or your scale company for this information.